

GENERAL NOTES

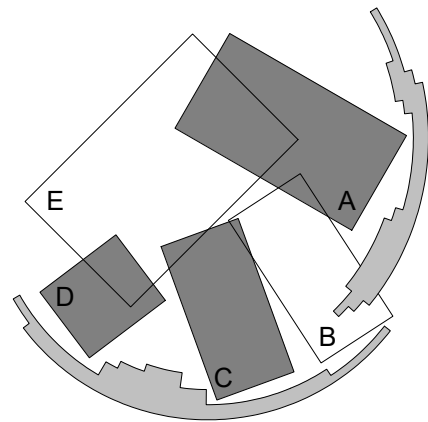
DO NOT SCALE FROM THIS DRAWING

CONFIRM ALL DIMENSIONS AND SETOUTS ON SITE PRIOR TO MANUFACTURE & INSTALLATION

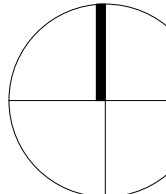
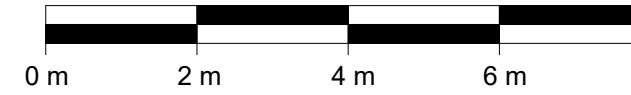
ALL WORK IN ACCORDANCE WITH RELEVANT AUSTRALIAN STANDARDS

TO BE READ IN CONJUNCTION WITH ENGINEERS DOCUMENTS.

KEY PLAN



LEGEND



00-06_MATERIAL LEGEND

| CODE | DESCRIPTION |
|------|-------------|
|------|-------------|

| | |
|--------|----------------------------|
| CB-01 | Concrete Block |
| CF-01 | Concrete Floor |
| CPT-01 | Carpet Tile |
| CS-01 | Canopy Shading |
| EF-01 | External Façade |
| GW-01 | Gabion Wall |
| RF-01 | Metal Sheetting |
| RF-02 | Polycarbonate Sheetting |
| SG-01 | Steel Grating |
| TC-01 | Timber Columns (Recycled) |
| TF-01 | Timber Flooring (Recycled) |

| | | |
|-----|----------|-------------------------|
| 01 | 07/06/23 | Development Application |
| Rev | Date | Description |

Sydney Level 2, 79 Myrtle St
Chippendale 2008
Nominated Architect: Gerard Reinmuth 6629
T 02 9698 2198
F 02 9698 2353

Hobart 181 Elizabeth St
Hobart 7000
Nom. Architect TAS: Scott Balmforth CC1041T
Registered Architect VIC: Scott Balmforth 16263
T 03 6234 6372
F 03 6231 4939

TERROIR

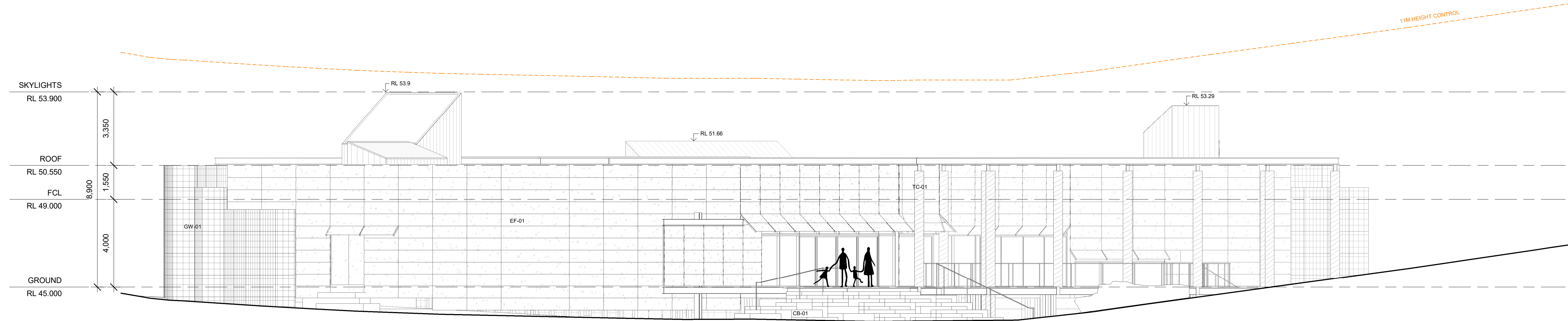
Project:
Shoalhaven City Council
Resource Recovery Learning Centre
120 Flatrock Road, Mundamia NSW
Drawing Description:
GROUND FLOOR PLAN

Drawn by: AN Checked by: JL Scale: 1:100 @ A1

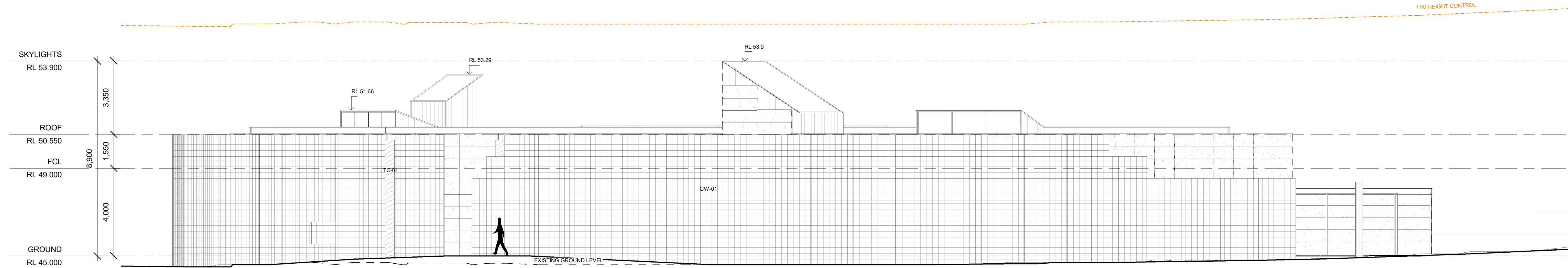
| | | |
|-------------|----------|---------|
| PROJECT NO: | DWG NO: | REV NO: |
| 22204 | DA-21-01 | 01 |

Drawing Status: DEVELOPMENT APPLICATION

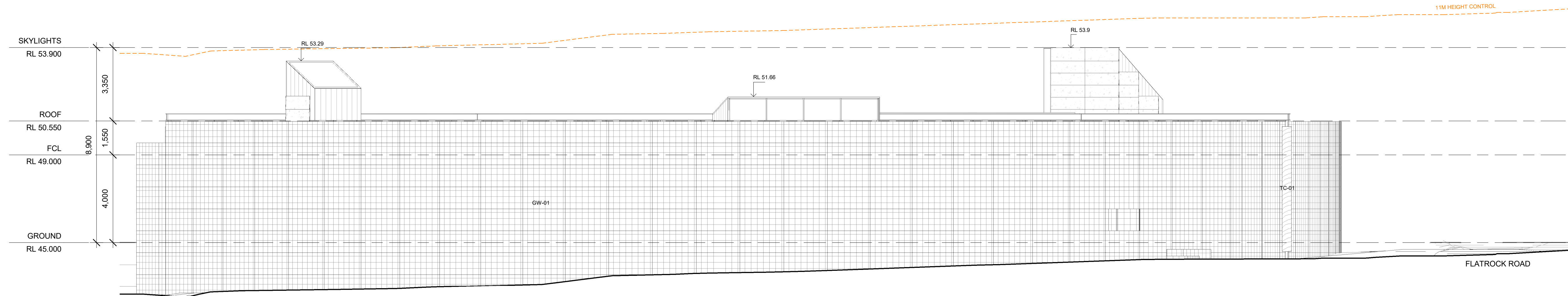




1 North Elevation
21-01 1:100



2 East Elevation
21-01 1:100



3 South Elevation
21-01 1:100

GENERAL NOTES

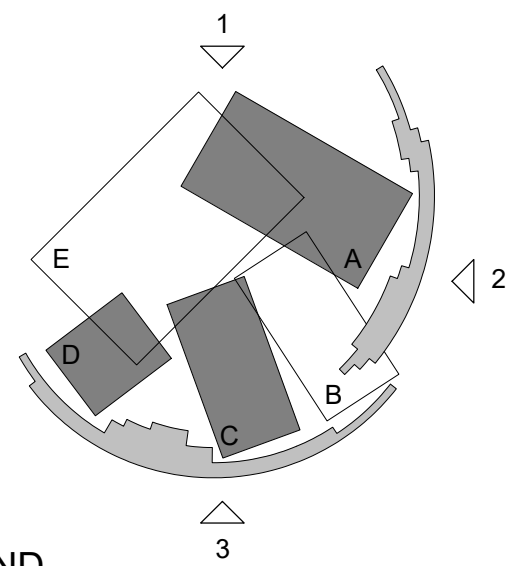
DO NOT SCALE FROM THIS DRAWING

CONFIRM ALL DIMENSIONS AND SETOUTS ON SITE PRIOR TO MANUFACTURE & INSTALLATION

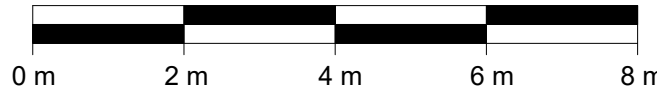
ALL WORK IN ACCORDANCE WITH RELEVANT AUSTRALIAN STANDARDS

TO BE READ IN CONJUNCTION WITH ENGINEERS DOCUMENTS.

KEY PLAN



LEGEND



| 00-06_MATERIAL LEGEND | |
|-----------------------|----------------------------|
| CODE | DESCRIPTION |
| CB-01 | Concrete Block |
| CF-01 | Concrete Floor |
| CPT-01 | Carpet Tile |
| CS-01 | Canopy Shading |
| EF-01 | External Faade |
| GW-01 | Gabion Wall |
| RF-01 | Metal Sheetting |
| RF-02 | Polycarbonate Sheetting |
| SG-01 | Steel Grating |
| TC-01 | Timber Columns (Recycled) |
| TF-01 | Timber Flooring (Recycled) |

| | | |
|-----|----------|-------------------------|
| 01 | 07/06/23 | Development Application |
| Rev | Date | Description |

Sydney Level 2, 79 Myrtle St
Chippendale 2008
Nominated Architect: Gerard Reinmuth 6629
T 02 9698 2198
F 02 9698 2353

Hobart 181 Elizabeth St
Hobart 7000
Nom. Architect TAS: Scott Balmforth CC1041T
Registered Architect VIC: Scott Balmforth 16263
T 03 6234 6372
F 03 6231 4939

TERROIR

Project:
Shoalhaven City Council
Resource Recovery Learning Centre
120 Flatrock Road, Mundamia NSW

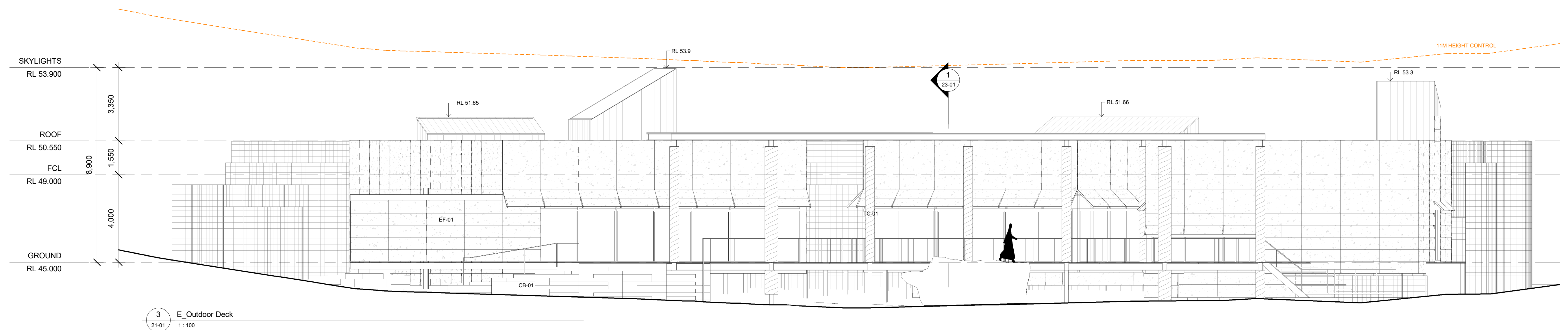
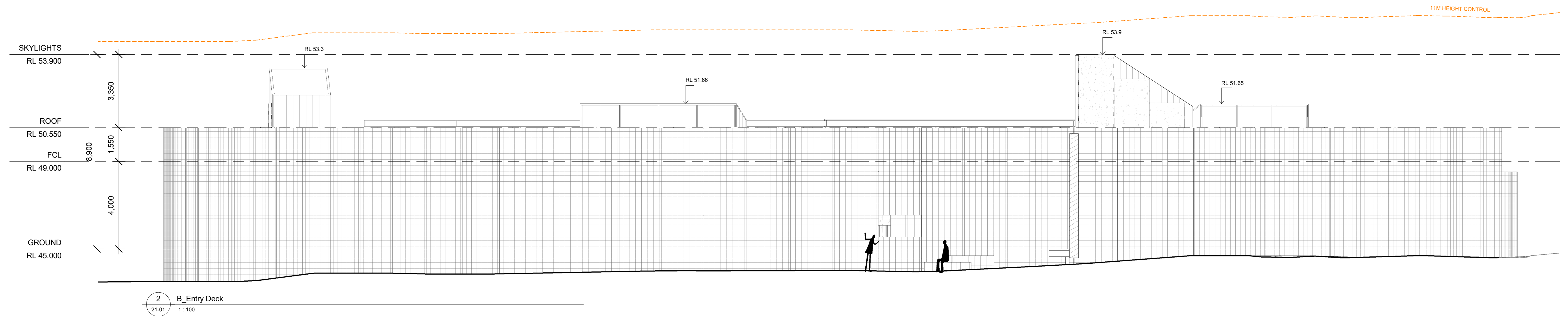
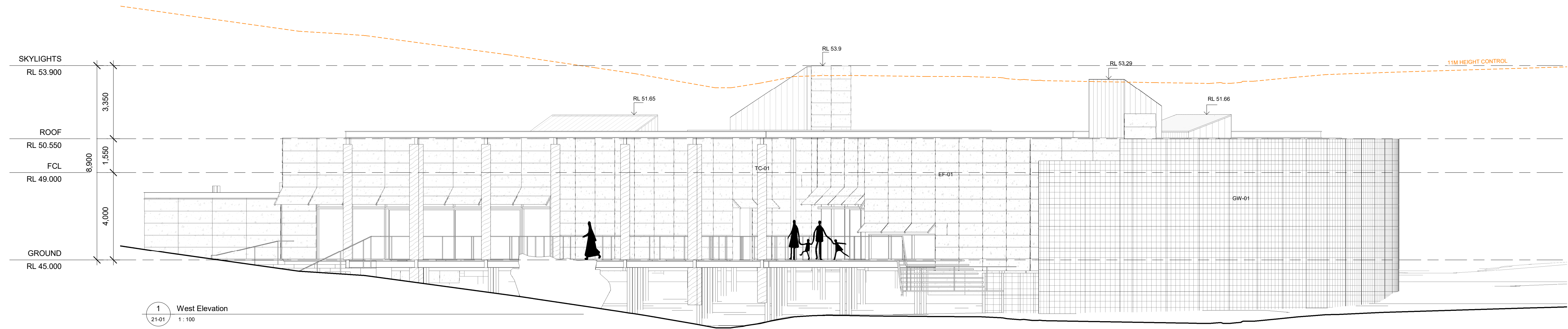
Drawing Description:

BUILDING ELEVATIONS

Drawn by: AN Checked by: JL Scale: 1:100 @ A1

| | | |
|-------------|----------|---------|
| PROJECT NO: | DWG NO: | REV NO: |
| 22204 | DA-22-01 | 01 |

Drawing Status: DEVELOPMENT APPLICATION



GENERAL NOTES

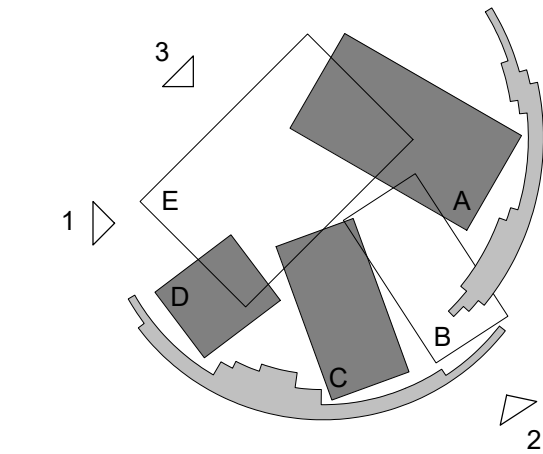
DO NOT SCALE FROM THIS DRAWING

CONFIRM ALL DIMENSIONS AND SETOUTS ON SITE PRIOR TO MANUFACTURE & INSTALLATION

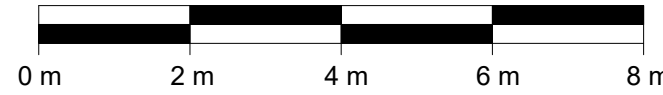
ALL WORK IN ACCORDANCE WITH RELEVANT AUSTRALIAN STANDARDS

TO BE READ IN CONJUNCTION WITH ENGINEERS DOCUMENTS.

KEY PLAN



LEGEND



| 00-06_MATERIAL LEGEND | |
|-----------------------|----------------------------|
| CODE | DESCRIPTION |
| CB-01 | Concrete Block |
| CF-01 | Concrete Floor |
| CPT-01 | Carpet Tile |
| CS-01 | Canopy Shading |
| EF-01 | External Façade |
| GW-01 | Gabion Wall |
| RF-01 | Metal Sheetting |
| RF-02 | Polycarbonate Sheetting |
| SG-01 | Steel Grating |
| TC-01 | Timber Columns (Recycled) |
| TF-01 | Timber Flooring (Recycled) |

| | | |
|-----|----------|-------------------------|
| 01 | 07/06/23 | Development Application |
| Rev | Date | Description |

Sydney Level 2, 79 Myrtle St
Chippendale 2008
Nominated Architect: Gerard Reinmuth 6629
T 02 9698 2198
F 02 9698 2353

Hobart 181 Elizabeth St
Hobart 7000
Nom. Architect TAS: Scott Balmforth CC1041T
Registered Architect VIC: Scott Balmforth 16263
T 03 6234 6372
F 03 6231 4939

TERROIR

Project:
Shoalhaven City Council
Resource Recovery Learning Centre
120 Flatrock Road, Mundamia NSW
Drawing Description:
BUILDING ELEVATIONS

Drawn by: AN Checked by: JL Scale: 1:100 @ A1

| | | |
|----------------------|---------------------|---------------|
| PROJECT NO: 22204 | DWG NO: DA-22-02 | REV NO: 01 |
|----------------------|---------------------|---------------|

Drawing Status: DEVELOPMENT APPLICATION

GENERAL NOTES

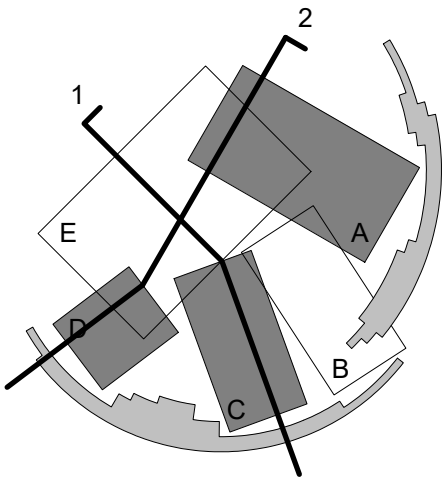
DO NOT SCALE FROM THIS DRAWING

CONFIRM ALL DIMENSIONS AND SETOUTS ON SITE PRIOR TO MANUFACTURE & INSTALLATION

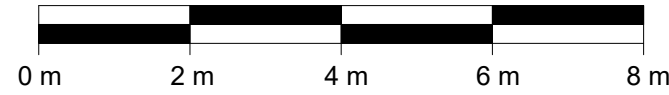
ALL WORK IN ACCORDANCE WITH RELEVANT AUSTRALIAN STANDARDS

TO BE READ IN CONJUNCTION WITH ENGINEERS DOCUMENTS.

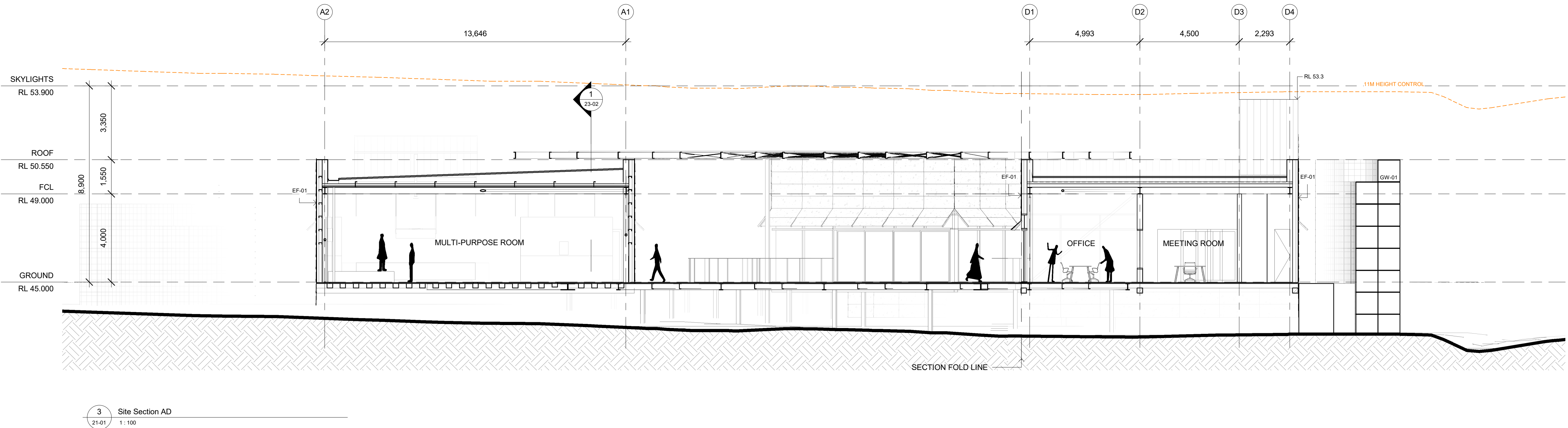
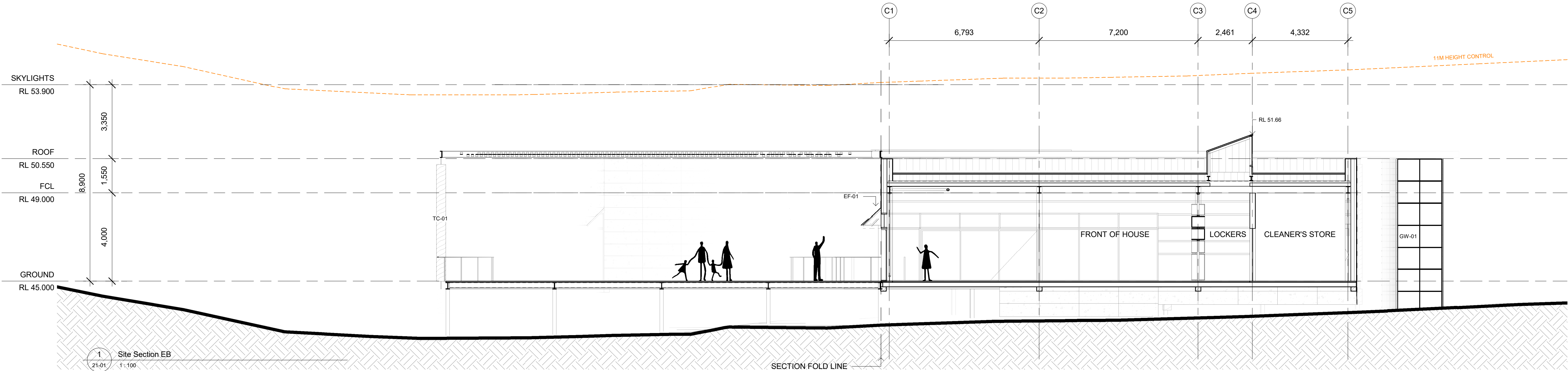
KEY PLAN



LEGEND



| 00-06_MATERIAL LEGEND | |
|-----------------------|----------------------------|
| CODE | DESCRIPTION |
| CB-01 | Concrete Block |
| CF-01 | Concrete Floor |
| CPT-01 | Carpet Tile |
| CS-01 | Canopy Shading |
| EF-01 | External Façade |
| GW-01 | Gabion Wall |
| RF-01 | Metal Sheetting |
| RF-02 | Polycarbonate Sheetting |
| SG-01 | Steel Grating |
| TC-01 | Timber Columns (Recycled) |
| TF-01 | Timber Flooring (Recycled) |



| | | |
|-----|----------|-------------------------|
| 01 | 07/06/23 | Development Application |
| Rev | Date | Description |

Sydney Level 2, 79 Myrtle St
Chippendale 2008
Nominated Architect: Gerard Reinmuth 6629
T 02 9698 2198
F 02 9698 2353

Hobart 181 Elizabeth St
Hobart 7000
Nom. Architect TAS: Scott Balmforth CC1041T
Registered Architect VIC: Scott Balmforth 16263
T 03 6234 6372
F 03 6231 4939

TERROIR

Project:
Shoalhaven City Council
Resource Recovery Learning Centre
120 Flatrock Road, Mundamia NSW

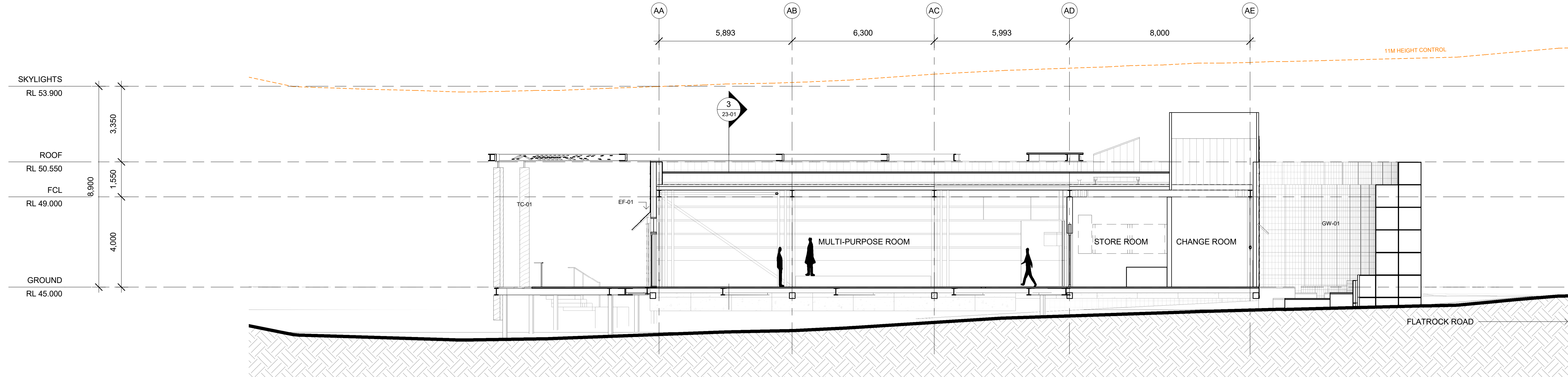
Drawing Description:

SITE SECTIONS

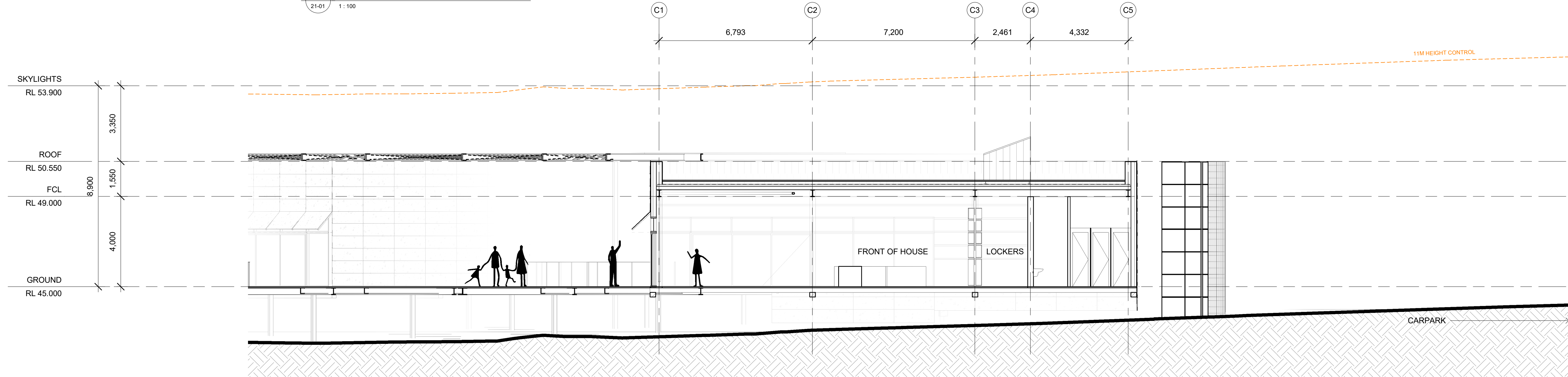
Drawn by: AN Checked by: JL Scale: 1:100 @ A1

| | | |
|-------------|----------|---------|
| PROJECT NO: | DWG NO: | REV NO: |
| 22204 | DA-23-01 | 01 |

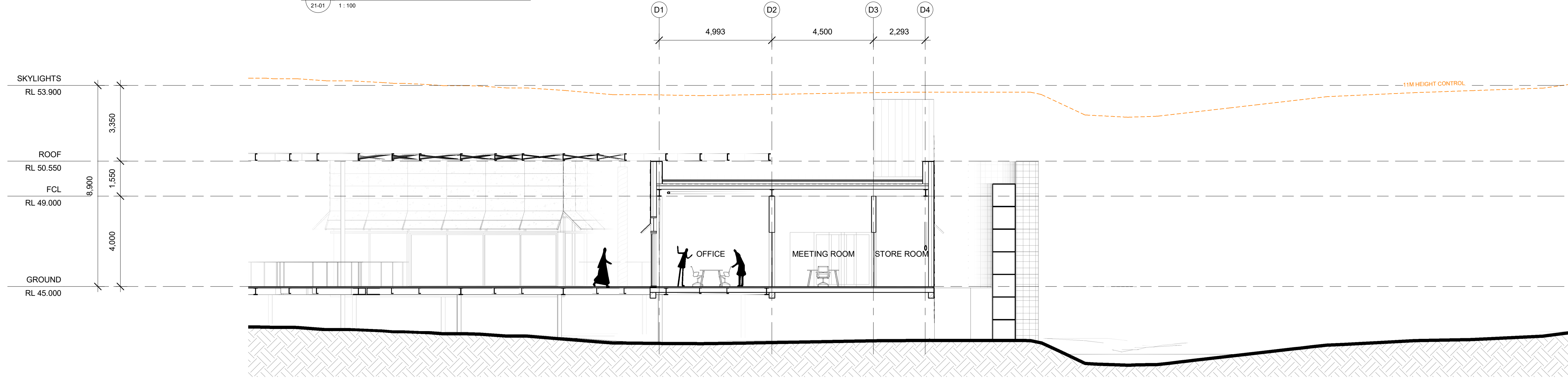
Drawing Status: DEVELOPMENT APPLICATION



1 A_Multi-Use - Long
21-01 1:100



2 C_Front of House - Long
21-01 1:100



3 D_Office - Long
21-01 1:100

GENERAL NOTES

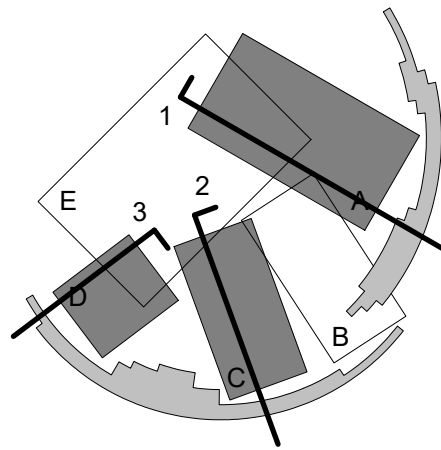
DO NOT SCALE FROM THIS DRAWING

CONFIRM ALL DIMENSIONS AND SETOUTS ON SITE PRIOR TO MANUFACTURE & INSTALLATION

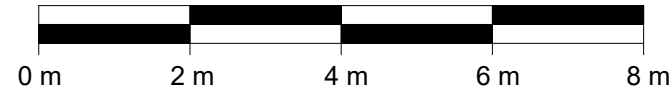
ALL WORK IN ACCORDANCE WITH RELEVANT AUSTRALIAN STANDARDS

TO BE READ IN CONJUNCTION WITH ENGINEERS DOCUMENTS.

KEY PLAN



LEGEND



| 00-06_MATERIAL LEGEND | |
|-----------------------|----------------------------|
| CODE | DESCRIPTION |
| CB-01 | Concrete Block |
| CF-01 | Concrete Floor |
| CPT-01 | Carpet Tile |
| CS-01 | Canopy Shading |
| EF-01 | External Façade |
| GW-01 | Gabion Wall |
| RF-01 | Metal Sheetting |
| RF-02 | Polycarbonate Sheetting |
| SG-01 | Steel Grating |
| TC-01 | Timber Columns (Recycled) |
| TF-01 | Timber Flooring (Recycled) |

| | | |
|-----|----------|-------------------------|
| 01 | 07/06/23 | Development Application |
| Rev | Date | Description |

Sydney Level 2, 79 Myrtle St
Chippendale 2008
Nominated Architect: Gerard Reinmuth 6629
T 02 9698 2198
F 02 9698 2353

Hobart 181 Elizabeth St
Hobart 7000
Nom. Architect TAS: Scott Balmforth CC1041T
Registered Architect VIC: Scott Balmforth 16263
T 03 6234 6372
F 03 6231 4939

TERROIR

Project:
Shoalhaven City Council
Resource Recovery Learning Centre
120 Flatrock Road, Mundamia NSW

Drawing Description:
BUILDING SECTIONS

Drawn by: AN Checked by: JL Scale: 1:100 @ A1

| | | |
|-------------|----------|---------|
| PROJECT NO: | DWG NO: | REV NO: |
| 22204 | DA-23-02 | 01 |

Drawing Status: DEVELOPMENT APPLICATION